

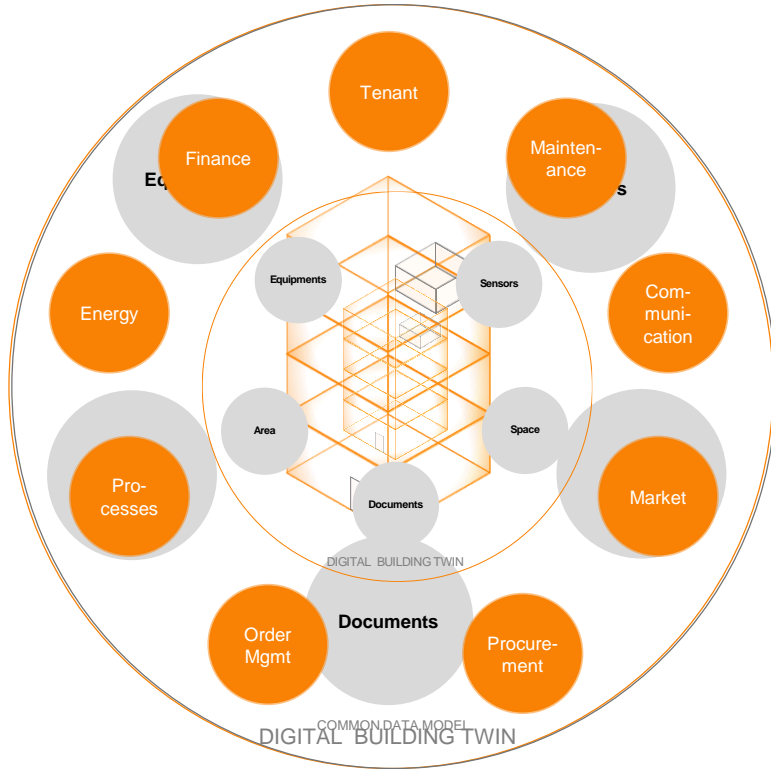
A holistic approach on building portfolio management and carbon risk

Dr. Jens Hirsch | BuildingMinds Domain
Expert Sustainability



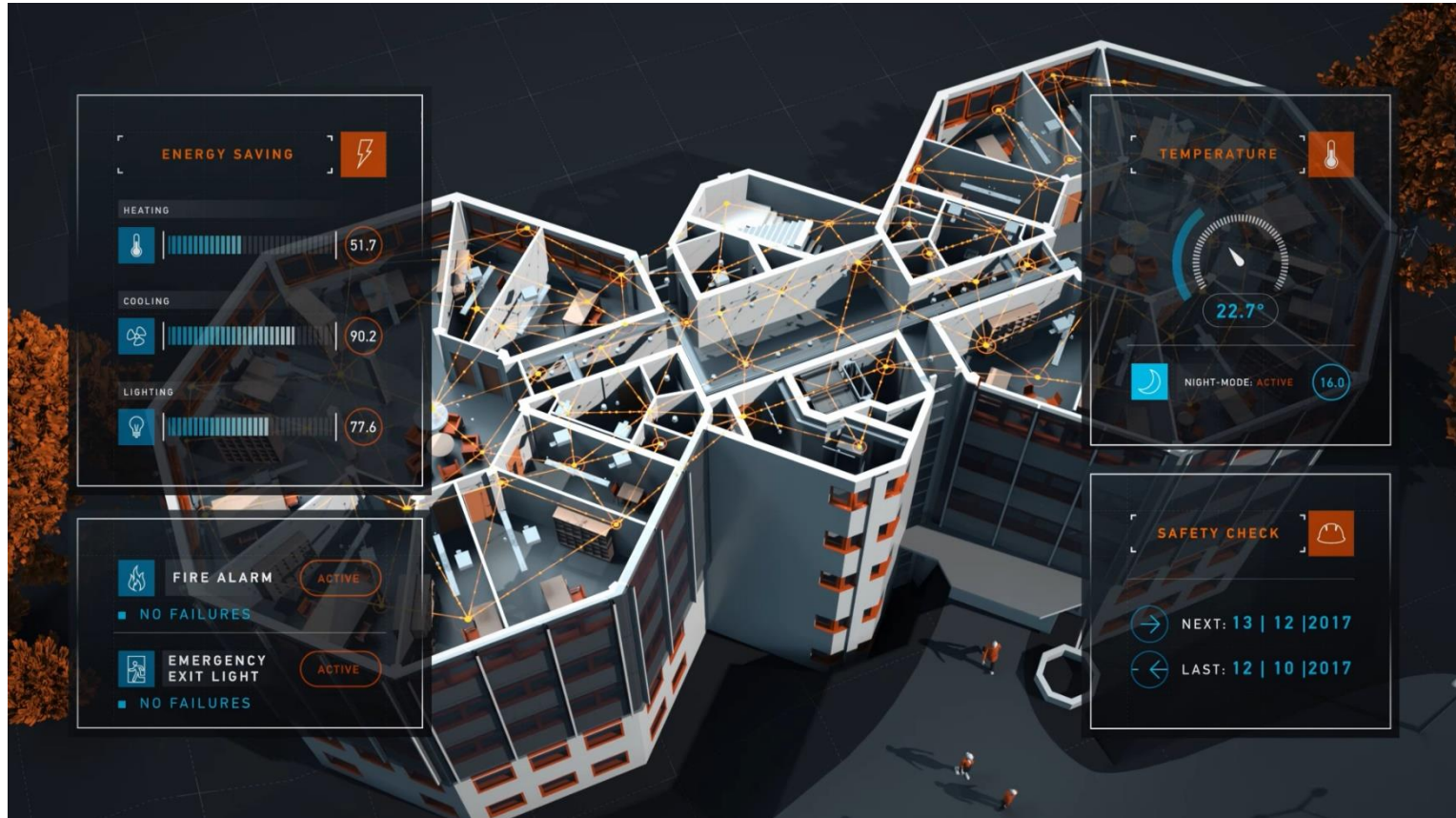
Status quo and upcoming challenges

BuildingMinds Digital Building Twin and The Common Data Model



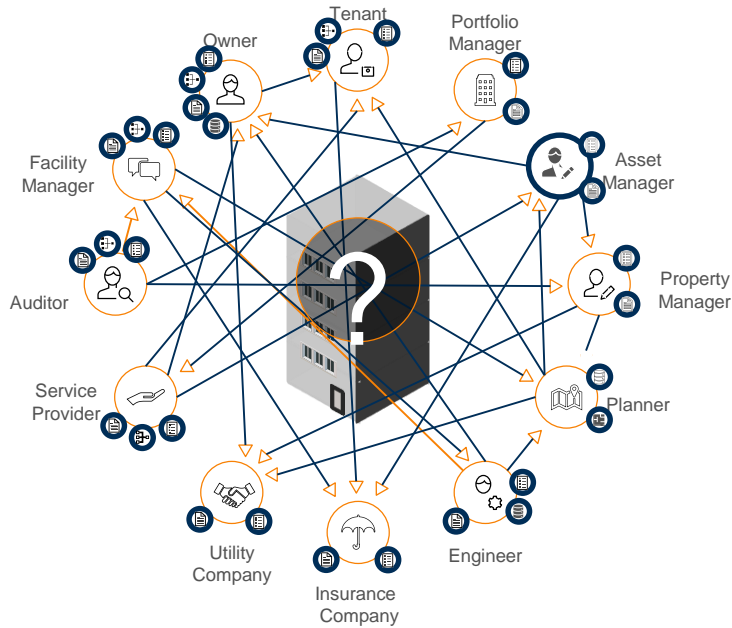
- Financial information
- Tenant information
- Energy consumption
- Contract information
- Service provider information
- Maintenance data
- Market information
- IoT (Internet of Things)
- Reporting / disclosure
- ...

Digital Building Twin: Single Source of Truth fusing Physical & Digital



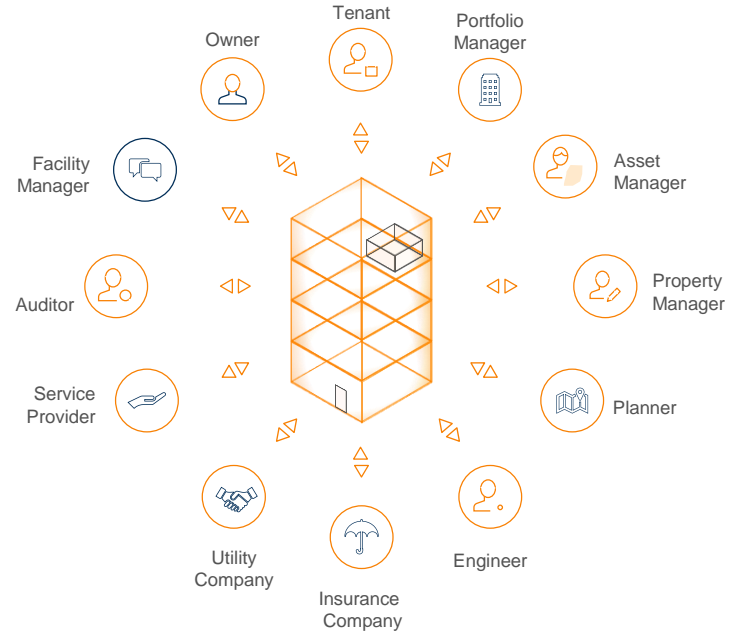
Digital Building Twin: Unleash the power of data

Without Digital Twin



Separate Data Silos

With Digital Twin



Integrated Solution



INTEGRATED FULL-SCALE PERFORMANCE ANALYTICS

STANDARDIZED
DASHBOARDS

CUSTOM
DASHBOARDS

SMART ALGORITHMS / MACHINE
LEARNING / ARTIFICIAL INTELLIGENCE

DIGITAL BUILDING TWIN

MANAGE PERFORMANCE FROM THE ENTIRE PORTFOLIO TO THE
SINGLE BUILDING

COMMON DATA MODEL

BE THE MASTERMIND
OF YOUR ASSETS

DATA NORMALIZATION AND AUGMENTATION

DATA INTEGRATION



ERP



CAFM



Technical
Due Diligence



EXT. Service
Provider



BMS



Market Data



...

COMMON DATA MODEL



DIGITAL BUILDING TWIN



DATA-DRIVEN INSIGHTS



OPEN API & CONNECTORS



1 | Transparency



2 | Resource efficiency



3 | Resilience



Energy management



Scope 1, 2 and 3 CO2e
emissions tracking



Water and waste
management



Transition Risk
management

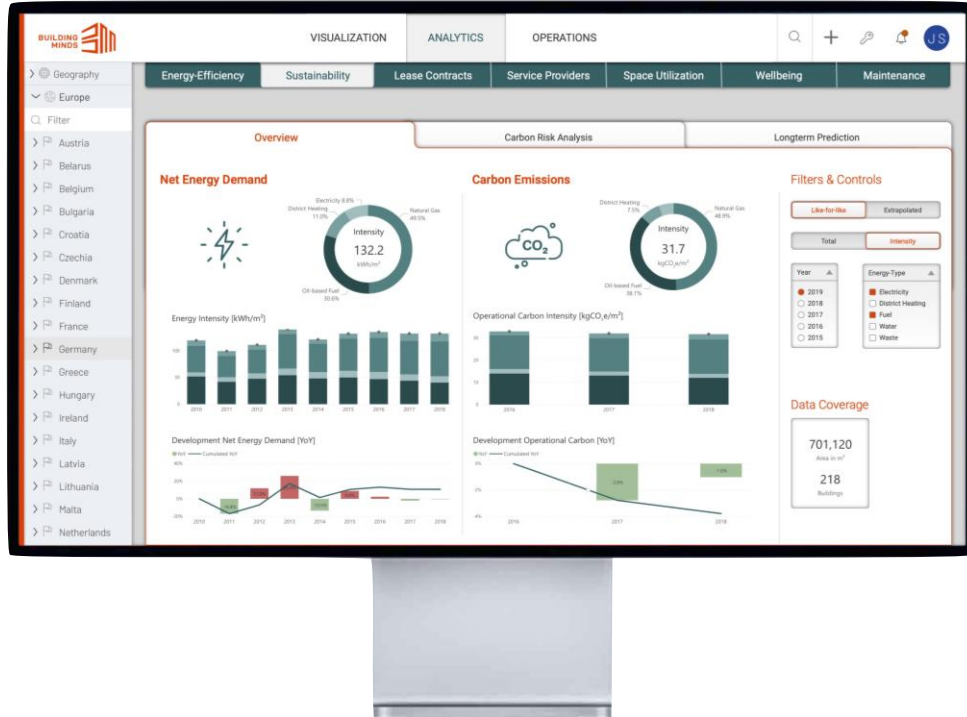


Sustainability Cockpit

Product Roadmap

BuildingMinds Sustainability Cockpit

ENERGY CONSUMPTION & CARBON FOOTPRINT



Overview of Ressource Consumption

- Aggregated consumption data from portfolio down to building-level for all types of energy, water & waste

Energy Consumption and Carbon Emission Details

- Breakdown into different energy-types and sources
- Intensity figures (per sqm) for portfolio, sub-portfolios, business-units, regions or individual buildings
- Separation and reporting of scope 1, 2 & 3 emissions (from owner or tenant-perspective according to Greenhouse Gas Protocol)
- Development of energy consumption over time

Overview of Operational Carbon Footprint

- Total carbon emissions - from portfolio down to building-level for electricity, district heating, fuels, water & waste

Embodied Carbon Footprint

- Estimation of embodied carbon from portfolio down to building level based on RICS Database
- Option for detailed calculation of embodied carbon footprint based on digital building twin

BuildingMinds Sustainability Cockpit

CARBON RISK MONITORING



Stranded asset monitor (CRREM targets)

- Overview of energy-intensity and carbon-intensity in comparison to CRREM targets based on EU climate goals (max. +2°C)
- Building performance development over time based on energy mix and predicted consumption
- overview for entire portfolio, regions, business-units or individual buildings

Simulation of decarbonization paths*

- Calculation of operational carbon saving from transition to more sustainable energy sources or modernization efforts
- Estimation of carbon invest from modernization efforts (construction and materials) and break-even / „carbon ROI“

Simulation of carbon pricing

- setting individual carbon prices in €/tCO₂e to predict the impact on portfolio value and compare saving from modernization efforts
- Option to include carbon offset initiatives to carbon footprint calculation and carbon risk prediction

BUILDING THE FUTURE STANDARD

INTERNATIONAL BUILDING PERFORMANCE & DATA INITIATIVE



IBPDI

ADDRESSING TODAY'S CHALLENGES. AND TOMORROW'S.



Challenge: A fragmented market



Challenge: Ununified data

1 + 1 = ?

Challenge: Missing standards

"SPEAKING ONE DATA LANGUAGE. ADAPT JOINT INDUSTRY STANDARDS.
MAKE REAL ESTATE BUSINESSES TRUE MASTERMINDS OF THEIR ASSETS."



Solution: The initiative is a **collaboration hub** between all stakeholders, improving process efficiency and effectiveness.



Solution: A **Common Data Model for Real Estate** will enable to democratize and harmonize data to accelerate businesses



Solution: One common data language for the real estate industry will ensure seamless data exchange & accelerate the digitalization in the real estate industry.

```
INDEXOFNNETESBORTHERE WILL BE ADD-AND-SIZE-METHODSFOR(INT I = 0; I < CON.LENGTH; I++){
RETURNUEONTASWAIKNDWIDFNEINTROBSOURHSH(String FILENAME)CONOWST= NULL)
EXCEPTION {
FOR(E12 | © 2020 IBPDI | all rights reserved
PUBLIC VOID DESCRATCH-ET-NEW STORMATCH()
SCANNER FILESCANNER = NEW SCANNER(NEW FILE(FILENAME)); TEMP.ADD(E;
```


FOUR STRONG, ENGAGED PARTNERS BUILD THE FOUNDATION.



BuildingMinds is a software company offering an integrated cloud platform, leveraging data-driven insights for advanced portfolio management.

www.buildingminds.com

RICS is a global organization with over 134,000 members and over 40 office locations all over the world.

www.rics.org

Microsoft Corporation is an American multinational technology company with headquarters in Redmond, Washington.

www.microsoft.com

pom+ is a Swiss consulting company in the real estate industry.

www.pom.ch

THANK YOU

The background of the slide is a grayscale aerial photograph of a city skyline, featuring several prominent skyscrapers. A large, semi-transparent orange rectangle covers the middle portion of the image, serving as a background for the contact information. The text is white and black, providing high contrast against the orange and grayscale backgrounds.

Contact us

JENS MUELLER

CEO

jens@buildingminds.com

+49 151 44018 793

[linkedin.com/in/jensmueller/](https://www.linkedin.com/in/jensmueller/)

JENS HIRSCH

Domain Expert Sustainability

jens.hirsch@buildingminds.com

+49 151 4221 8019

<https://www.linkedin.com/in/dr-jens-hirsch-612572139/>