



London Industry Seminar
CRREM-ERES

Stranding Risk

2nd Panel: Decarbonisation targets
and risk disclosure



European Real Estate Society & Carbon Risk Real Estate Monitor

London Industry Seminar
September 04, 2020

Erik Landry

Climate Change Specialist
GRESB



A g e n d a

Outline

1.GRESB

2.GRESB & CRREM

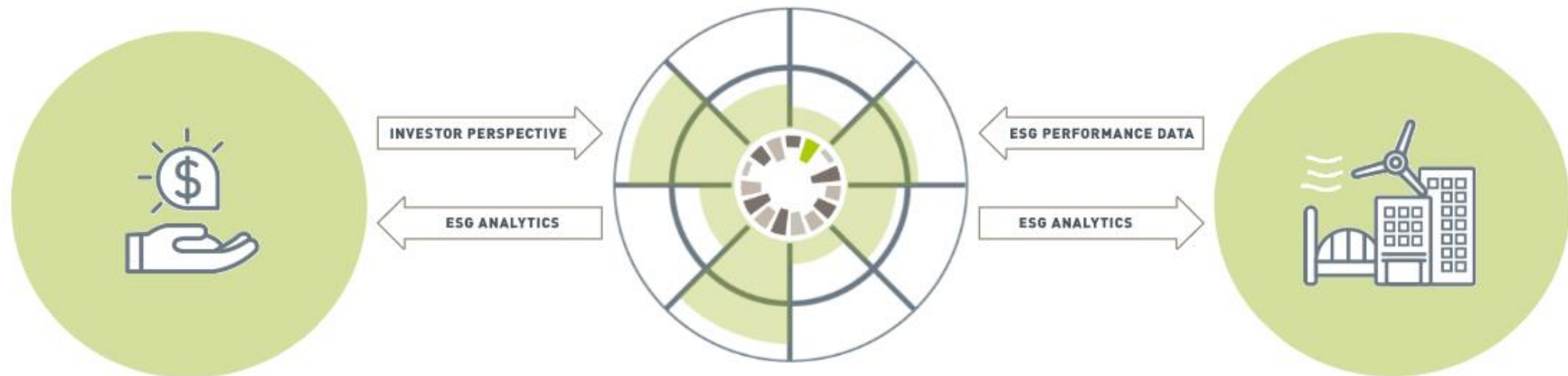
3.GRESB & WorldGBC

4.CRREM for reporting and disclosure

GRESB

The ESG Benchmark for Real Assets

What does GRESB do?



INSTITUTIONAL INVESTORS

Investors use GRESB data and analytical tools to manage ESG risks, capitalize on opportunities and engage with investment managers.

GRESB ASSESSMENTS

GRESB validates, scores and benchmarks ESG performance data, providing business intelligence and engagement tools to investors and managers.

COMPANIES, FUNDS AND ASSETS

Managers and operators complete the GRESB Assessments providing data on the ESG performance of their assets and portfolios.

GRESB

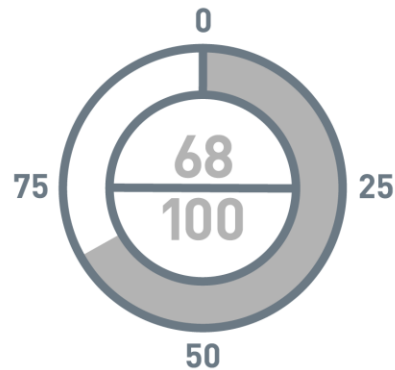
Processing of self-reported ESG data

SYSTEMATIC ASSESSMENT

COMPANIES | FUNDS | SEPARATE ACCOUNTS | JVS



1. VALIDATION



2. OBJECTIVE SCORING



3. PEER BENCHMARKING



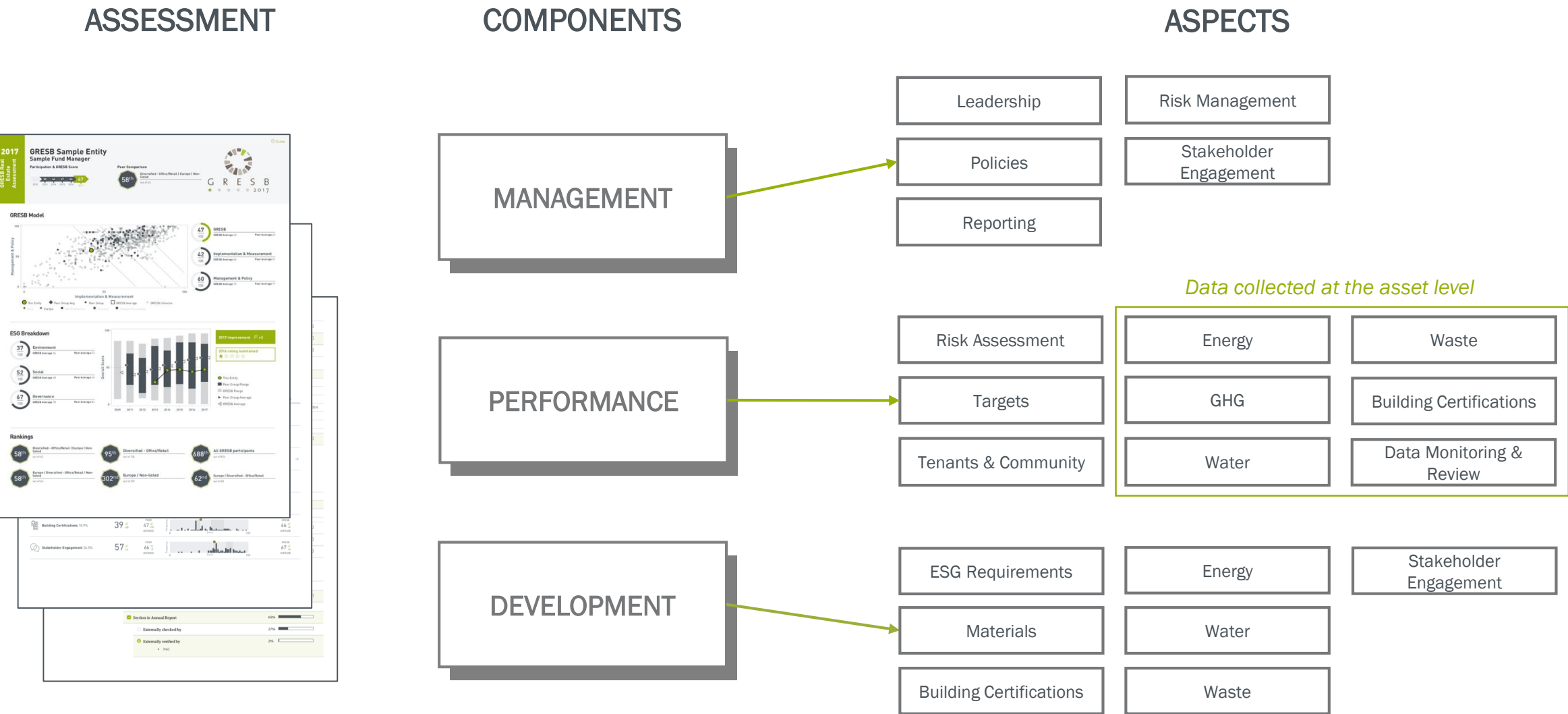
G R E S B

Over 100 institutional investor members → Over USD 22 trillion AUM





2020 GRESB Real Estate Assessment Structure

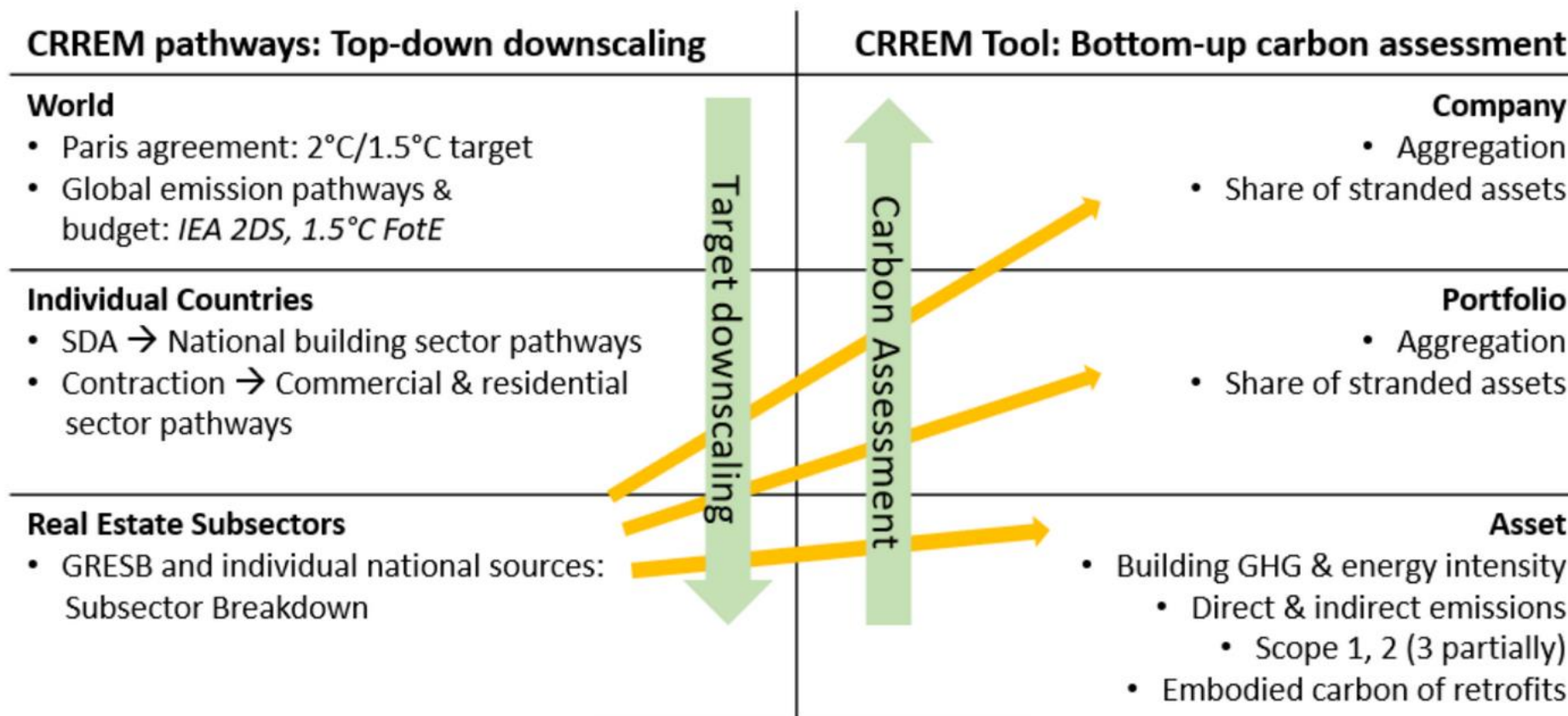




GRESB & CRREM

Target Setting: Top-down

Risk Assessment: Bottom-up



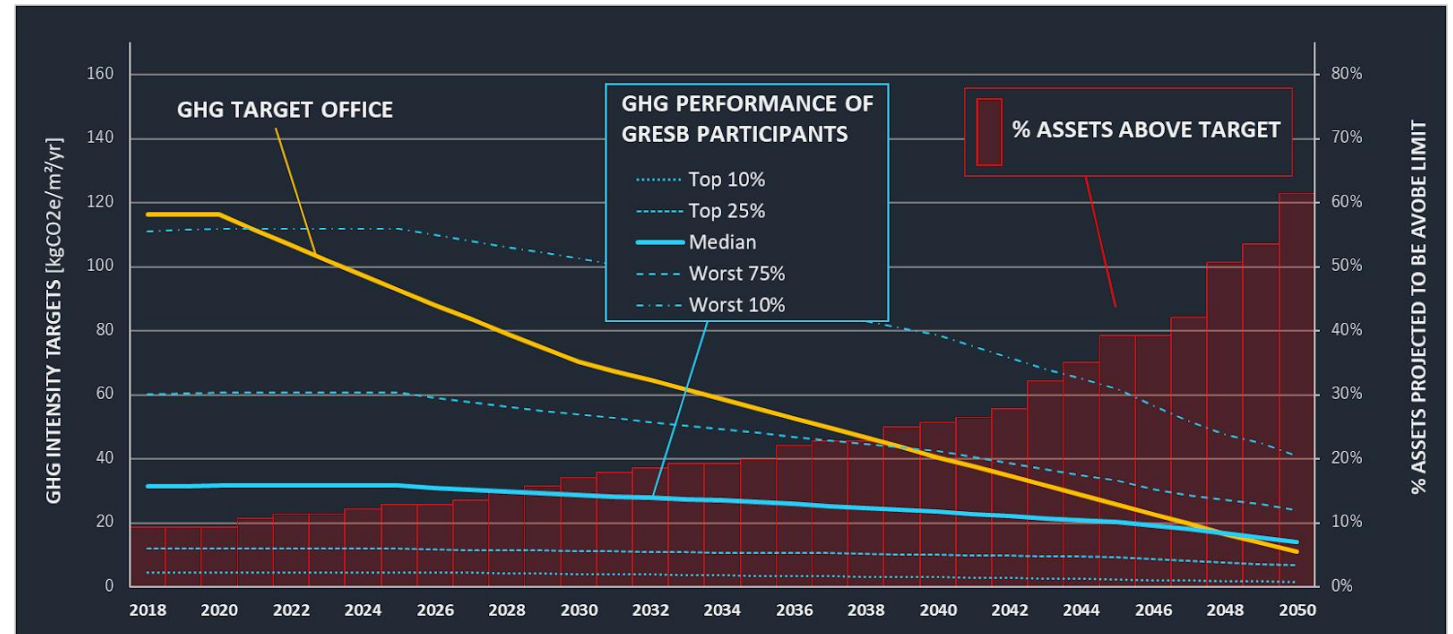
Source: CRREM



GRESB & CRREM

From the beginning

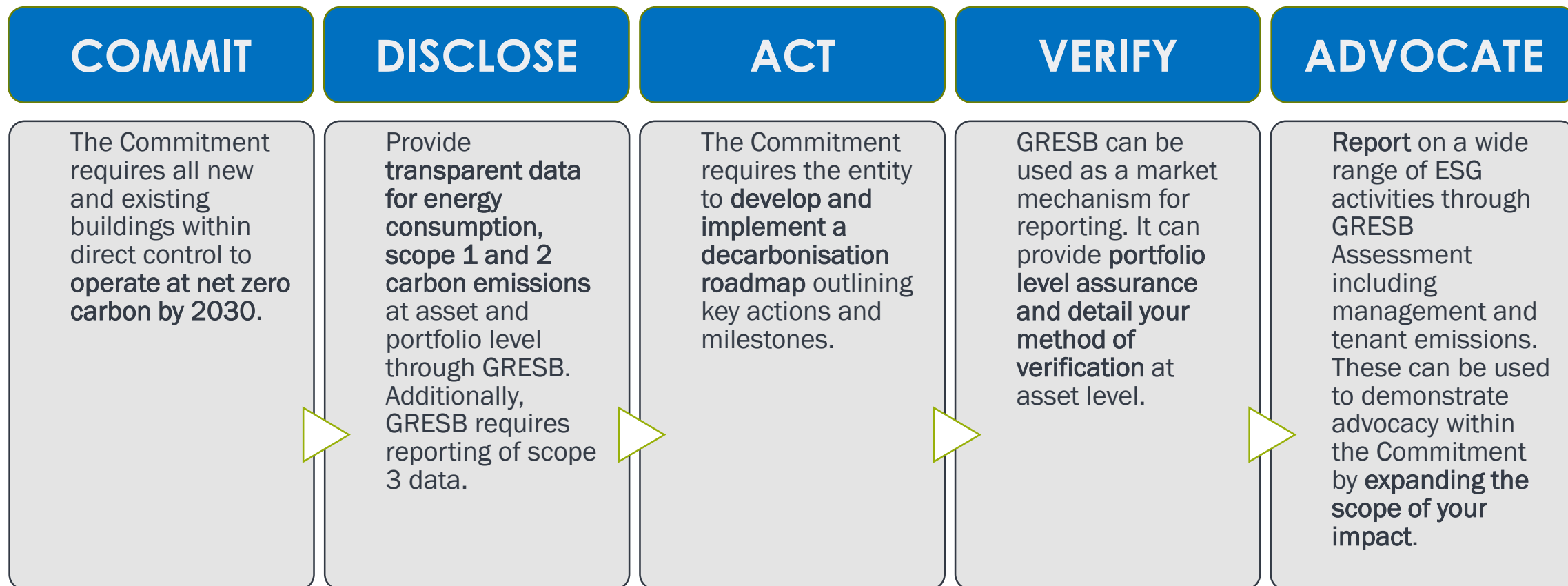
- Member of the CRREM Consortium
- Technical Expertise
 - Property Sector Classification System
 - Energy Intensity Benchmarks
 - Input Standardization
- Integration of CRREM pathways into GRESB





GRESB & WorldGBC

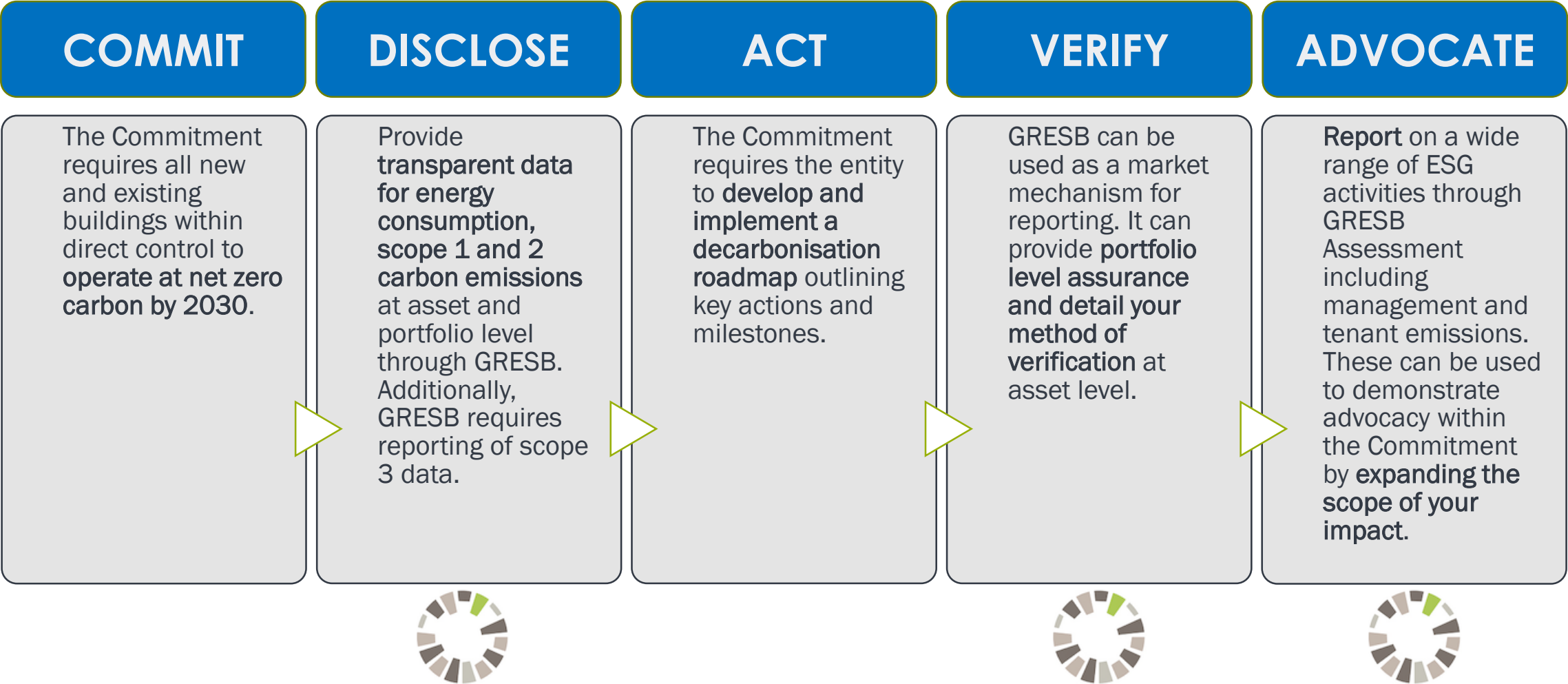
Alignment of Purpose: Net Zero Carbon Building Commitment





GRESB & WorldGBC

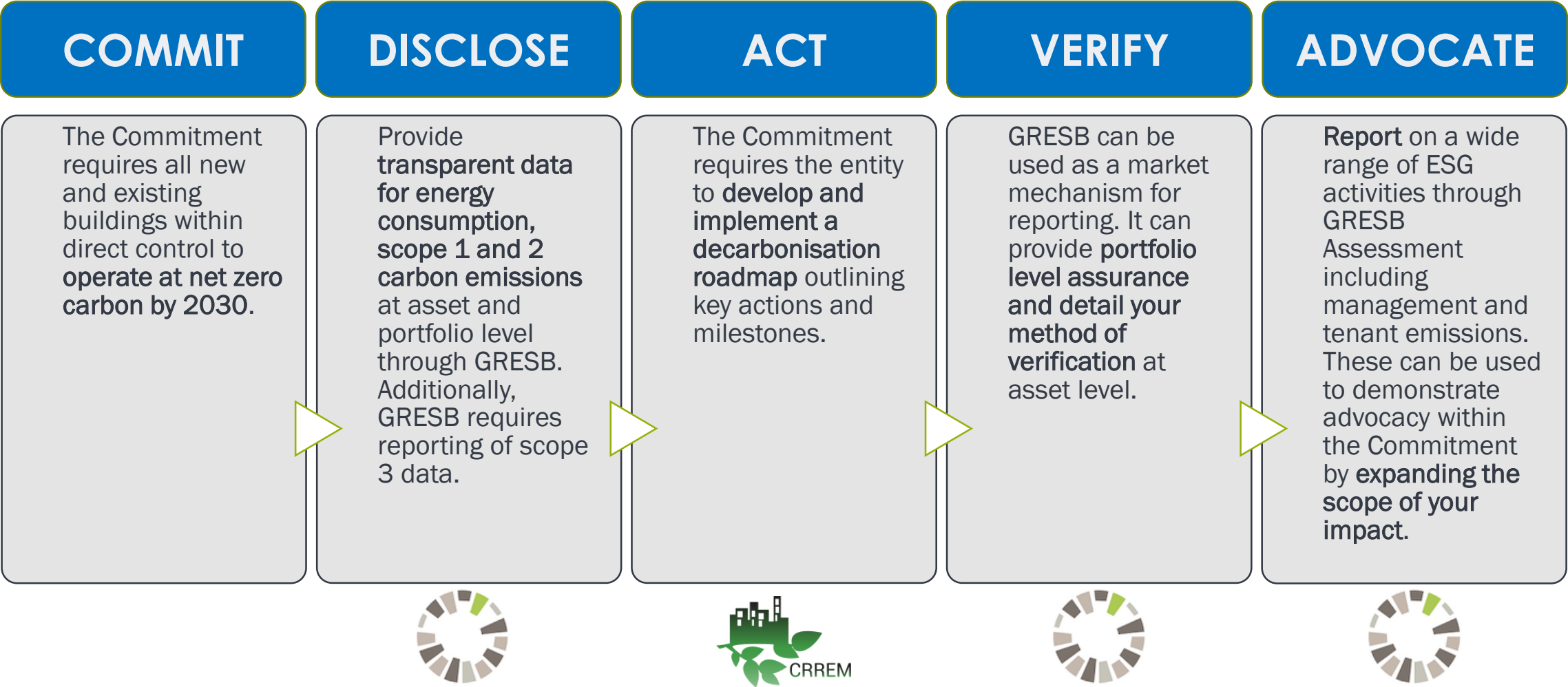
Alignment of Purpose: Net Zero Carbon Building Commitment





GRESB & WorldGBC

Alignment of Purpose: Net Zero Carbon Building Commitment



CRREM Reporting Templates

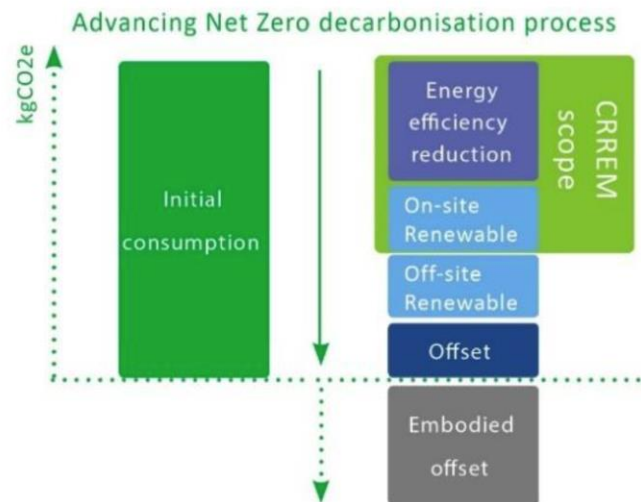
Helping Real Estate Investors Reconcile their Reporting Efforts

TCFD



Source: TCFD

WGBC Net-Zero Carbon Buildings Commitment



Source: WGBC adapted by CRREM

EU Taxonomy for Sustainable Activities



Source: TEG on Sustainable Finance

CRREM Reporting Templates

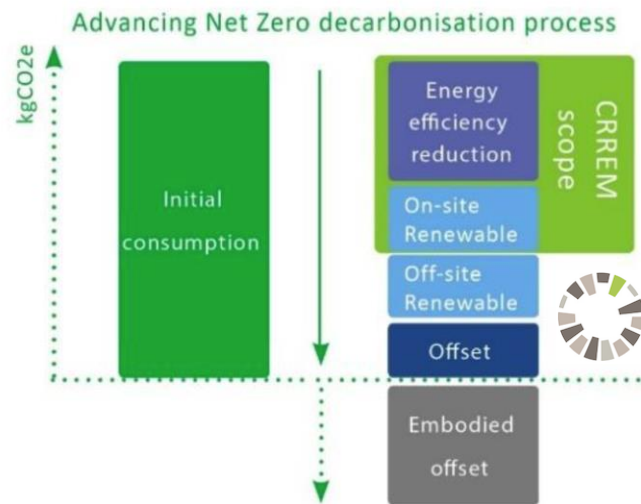
Helping Real Estate Investors Reconcile their Reporting Efforts

TCFD



Source: TCFD

WGBC Net-Zero Carbon Buildings Commitment



Source: WGBC adapted by CRREM

EU Taxonomy for Sustainable Activities



Source: TEG on Sustainable Finance



G R E S B[®]
REAL ESTATE

Thank you





Erik Landry

Climate Change Specialist

e.landry@gresb.com

+31 20 774 0220 – office

© 2020 GRESB BV

Unless explicitly stated otherwise, all rights including those in copyright in publication are owned by or controlled for these purposes by GRESB B.V. Except as otherwise expressly permitted under copyright law or GRESB B.V.'s terms and conditions, no part of this publication may be reproduced, copied, republished, downloaded, posted, broadcast or transmitted in any way without first obtaining GRESB B.V.'s written permission.